



# Instructions on how to insert SIM card in CALMS device

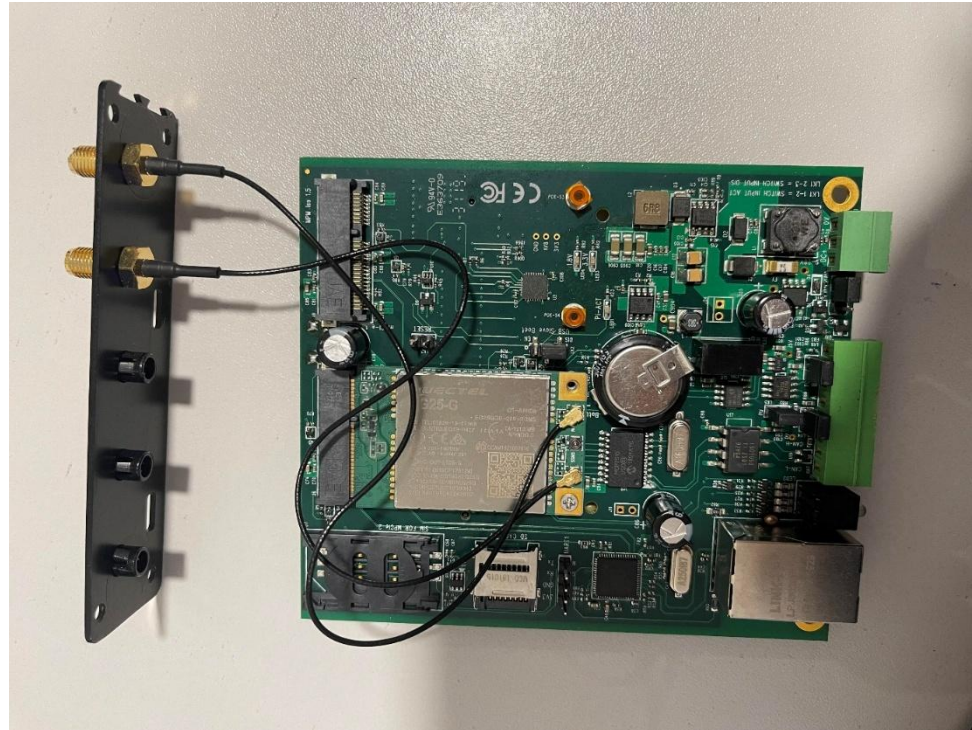
For CAL-EDGE-0



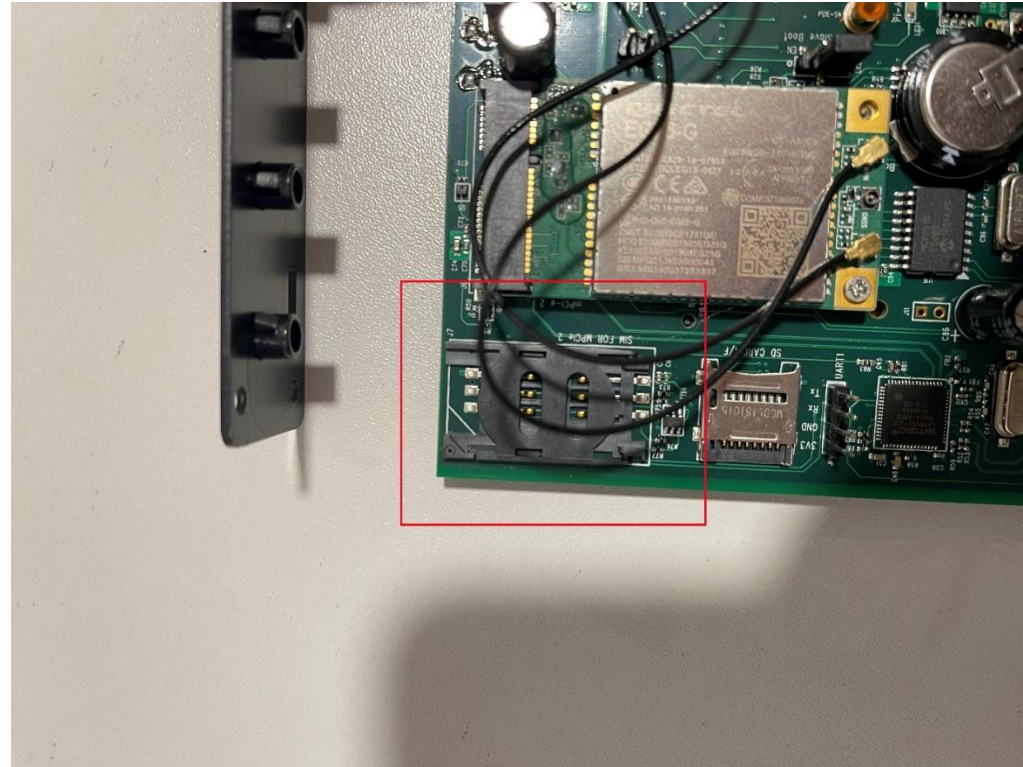
# 1. Unscrew the screws on both sides of the device



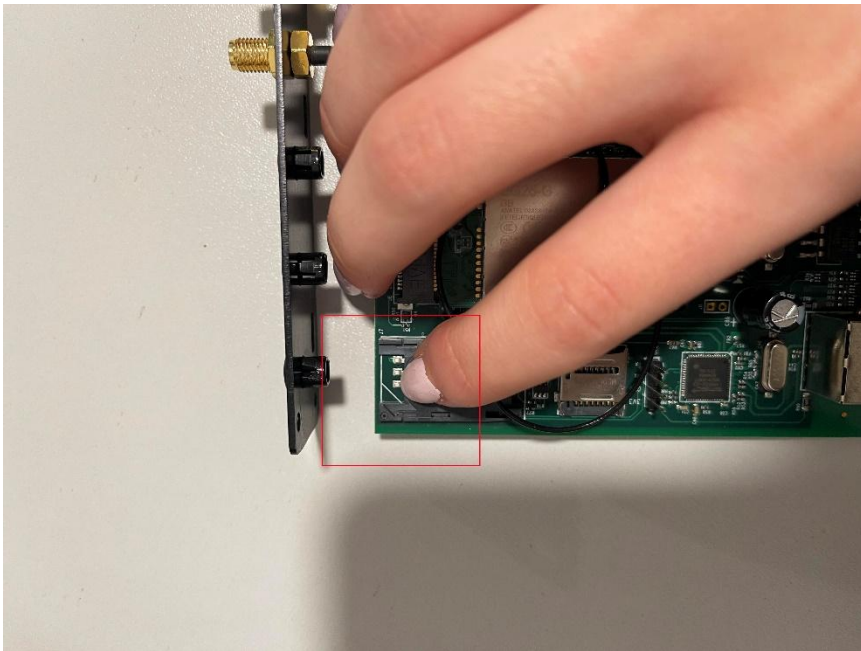
## 2. Carefully take out the board from one side.



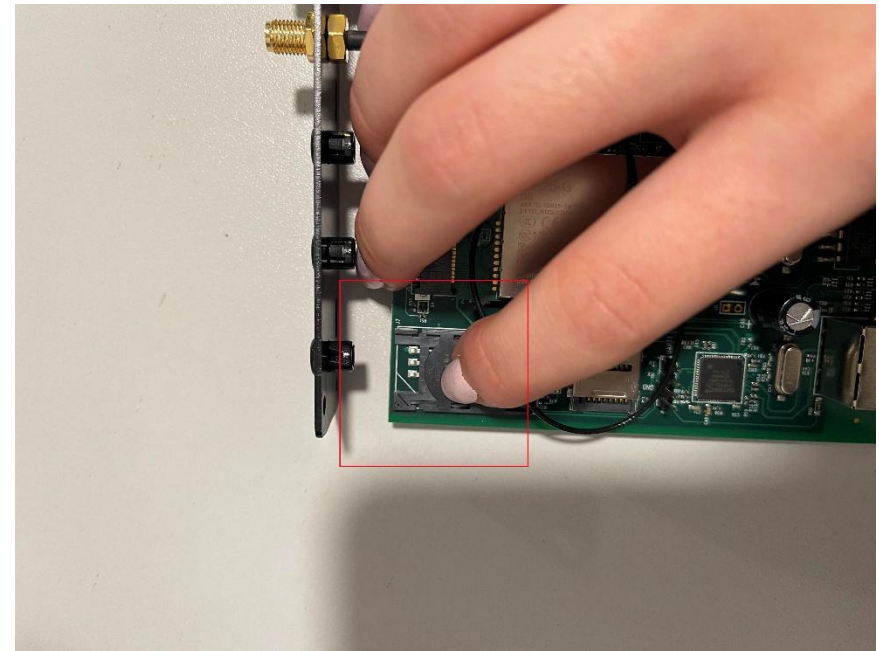
3. The marked place is where you should insert the SIM card.



4. First, to insert your SIM card, you must move the slot for the card to the right.



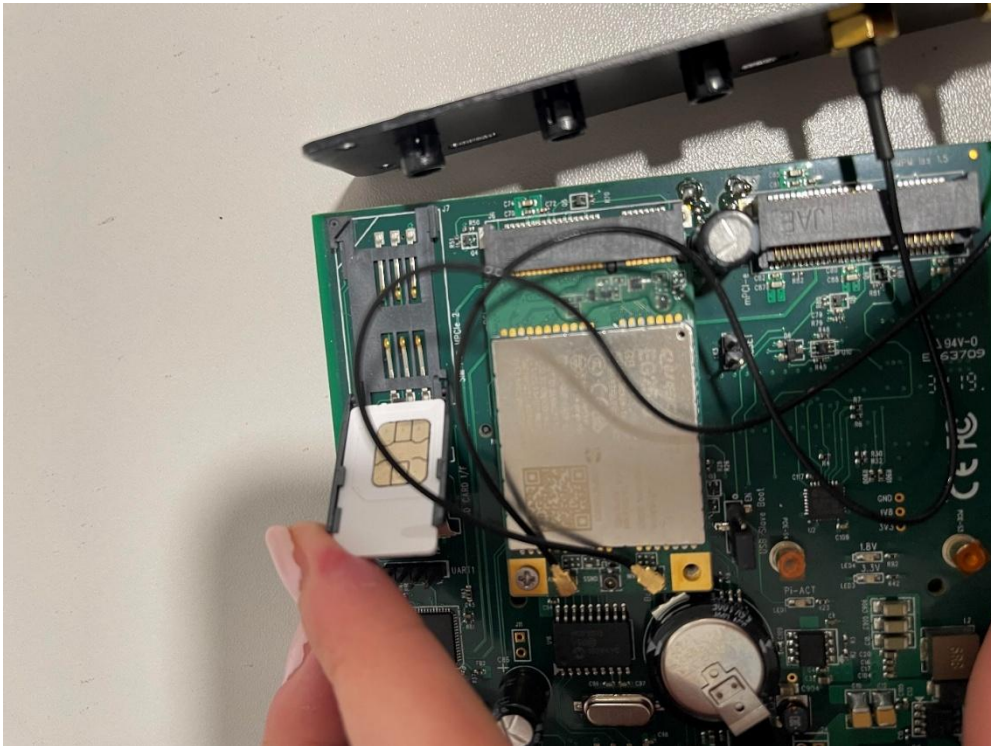
Not moved to the right



Moved to the right

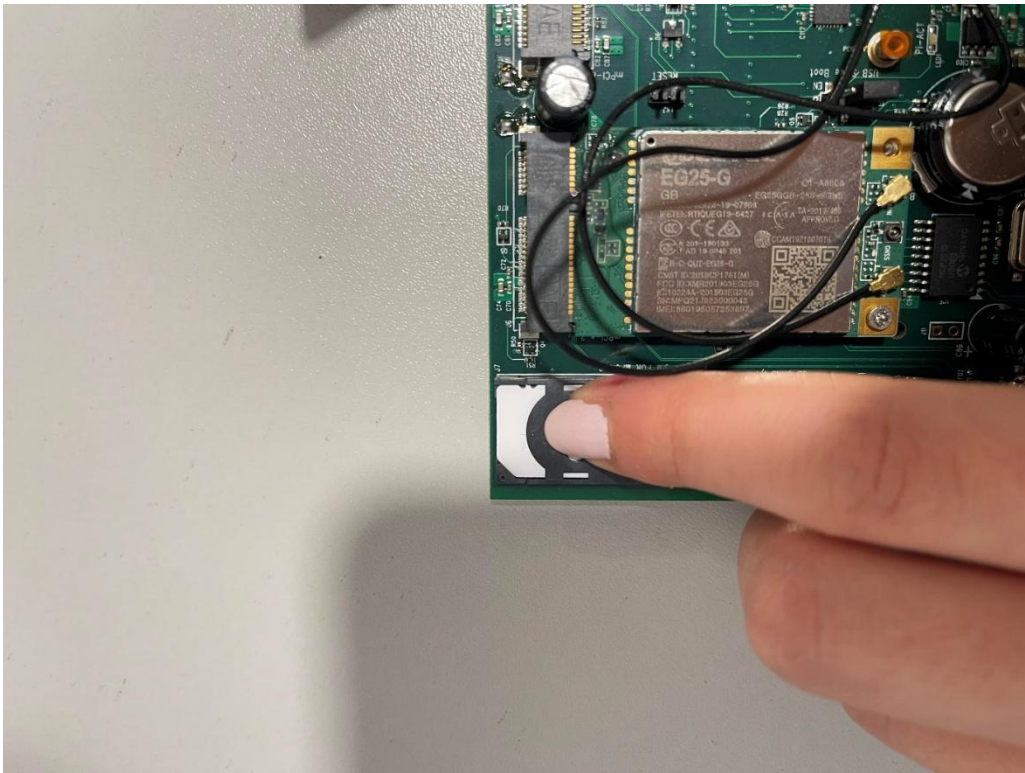


5. If you have done it correctly, you should be able to lift the black lid up.



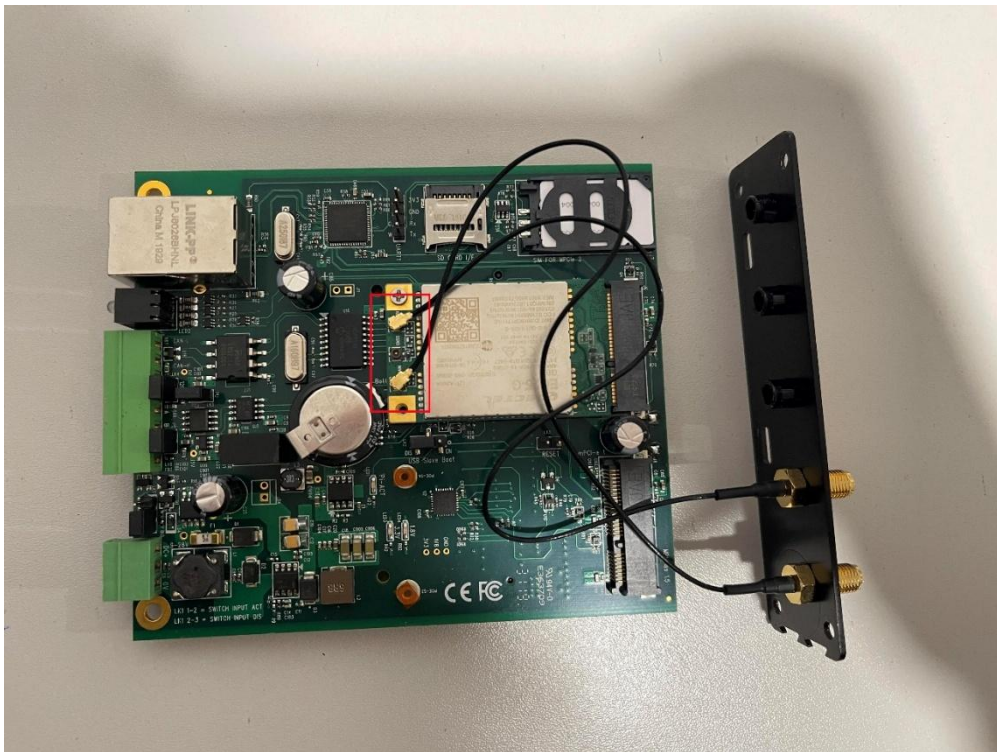
Insert your SIM card in the device like shown in the photo (be careful to insert it the right way).

6. Close the black lid with your SIM card and it is very important to now secure the card by sliding the black slot again now to your left.



You will know if you have done it correctly if you are no longer able to lift the black lid up and the card is secured in its place.

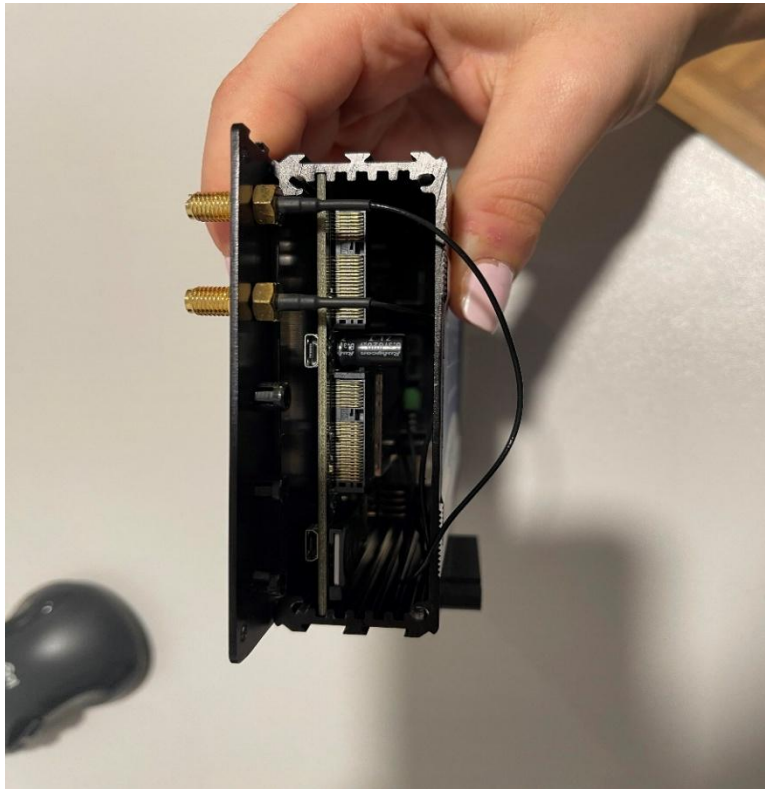
## 7. Check if the wirings have not (accidentally) been loosened.



The antenna wire(s) can sometimes be sensitive and it is strongly recommended to press it gently to just make sure it is secured.



8. When this is done you can now carefully put back the parts of the device.



Firstly, put the board in and then screw the black lids from both sides.

Disclaimer: CALMS cannot provide any additional support regarding device connectivity if custom SIM card is used.

In case the customer wants to use custom SIM card in the CAL-EDGE-0, changes in device settings need to be made.

For any further questions, please contact support team.  
Contact: [support@calms.com](mailto:support@calms.com)